

Fig. 1

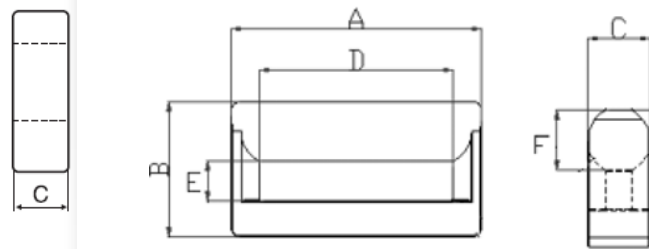


Fig. 2

FT型

尺寸Dim 型号 Type	图形 Fig.	A (mm)	B (mm)	C (mm)	D (mm)	E (mm)	F (mm)	G (mm)	H (mm)	C ₁ (mm ⁻¹)	Le (mm)	Ae (mm ²)	Ve (mm ³)
FT16A	1	16.0±0.3	6.00±0.25	6.00±0.25	—	—	—	—	3.70±0.2	2.38	47.30	19.90	941.27
FT19	1	19.5±0.3	5.00±0.3	5.00±0.3	6.80MIN	4.0±0.2	12.9MIN	3.20±0.2	3.20±0.2	2.92	50.30	17.20	865.16
FT19A	1	19.0±0.3	13.2±0.3	—	—	—	14.2MIN	5.50±0.2	2.30±0.2	1.57	44.30	28.20	1249.26
FT20	1	20.9±0.5	14.3±0.3	4.50±0.3	7.20MIN	4.1±0.3	15.7MIN	2.40±0.15	2.30±0.15	4.43	53.10	12.00	637.20
FT20A	1	20.7±0.15	14.1±0.25	4.60±0.2	7.35MIN	4.2±0.2	15.7MIN	2.40±0.15	2.30±0.15	4.23	52.90	12.50	661.25
FT22	1	21.5±0.3	14.9±0.25	4.50±0.3	7.60MIN	4.2±0.2	15.9MIN	2.80±0.2	2.65±0.15	4.37	56.20	13.40	753.08
FT22A	1	21.5±0.4	15.6±0.3	3.70±0.2	6.70MIN	5.00±0.2	15.2MIN	3.70±0.2	3.00±0.15	3.44	55.10	12.60	694.26
FT22B	1	21.8±0.3	15.9±0.2	4.30±0.2	—	4.50±0.2	—	—	—	2.99	55.40	16.10	891.94
FT23	1	23.4±0.6	15.7±0.5	4.60±0.3	—	3.60±0.25	—	3.60±0.25	3.60±0.25	3.89	51.50	17.20	886.80
FT26A	1	25.6±0.4	17.6±0.3	5.20±0.25	—	5.20±0.15	—	3.40±0.15	2.90±0.15	4.22	68.40	17.60	1203.84
FT26B	1	25.8±0.4	17.7±0.3	4.40±0.20	9.60MIN	4.40±0.2	18.8MIN	3.40±0.15	3.30±0.2	2.89	68.30	16.20	1106.46
FT30	1	30.0±0.4	19.8±0.3	6.40±0.15	8.90MIN	6.40±0.15	22.6MIN	4.20±0.15	3.55±0.15	3.08	77.40	26.80	2074.32
FT30A	1	30.0±0.4	19.8±0.3	5.70±0.2	9.70MIN	5.70±0.2	22.4MIN	4.20±0.15	3.60±0.2	3.08	76.50	24.80	1897.20
FT32A	1	31.5±0.8	22.7±0.6	7.80±0.2	—	6.30±0.30	—	6.30±0.30	6.30±0.15	1.67	83.33	49.90	4146.69
FT54.5	2	55.5 MAX	29.4 MAX	14.4 MAX	41.0 MIN	7.5 MIN	12.85±0.4	—	—	1.09	118.96	109.13	12982.47