

Fig. 1

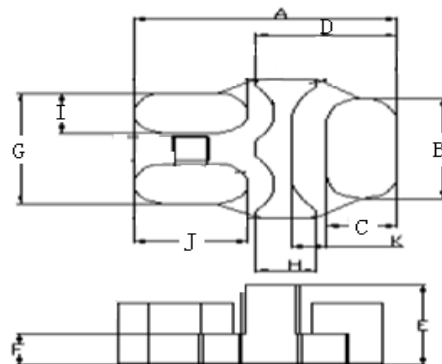
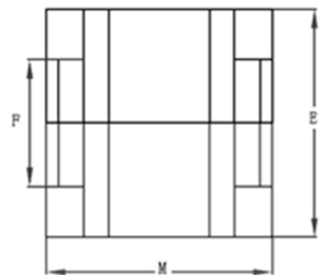


Fig. 2

### SZ型

尺寸Dim 型号 Type	图形 Fig.	A (mm)	B (mm)	C (mm)	D (mm)	E (mm)	F (mm)	G (mm)	H (mm)	I (mm)	J (mm)	K (mm)	L (mm)	M (mm)
SZ48.5	1	39.5±0.5	24.0±0.5	8.0±0.5	11.5±0.3	38.0±0.25	22.0±0.2	28.0±0.5	8.0±0.3	10.0±0.5	20.0±0.5		8.0±0.3	36.0±0.5
SZ48.5	2	48.5±0.7	28.8±0.5	13.0±0.3	26±0.4	23.0±0.2	9.0±0.2	31.8±0.5	11.0±0.3	11.4±0.3	21.0±0.5	6.5min	8.0±0.3	36.0±0.5